

The EMMA universities consortium

European Partner Universities (EMMA-EPU)

- France, University of Nice Sophia-Antipolis
Phone +33 492 07 69 14 - Fax +33 492 07 69 18
emma@unice.fr - <http://unice.fr/>
- Germany, Brandenburg University of Technology Cottbus - Senftenberg
molken@tu-cottbus.de - <http://www.b-tu.de>
- Italy, Seconda Università degli Studi di Napoli
Phone +39 0823 274291 - Fax +39 0823 274298
ui@unina2.it - <http://www.unina2.it/>
- The Netherlands, Technische Universiteit Delft
Phone +31 15 27 83348
m.j.f.stive@tudelft.nl - www.tudelft.nl
- Poland, University of Warsaw
Phone +48 22 55 24 070 - Fax +48 22 55 24 011
klementyna.kielak@adm.uw.edu.pl - <http://www.uw.edu.pl>
- Portugal, University of Evora
Phone +351 266 760242
ivdb@uevora.pt - <http://www.uevora.pt/>
- Romania, Lucian Blaga University Sibiu
Phone +40 269 210512 - Fax +40 269 210512
dana.preda@ulbsibiu.ro - <http://www.ulbsibiu.ro>

Asian Partner Universities (EMMA-APU)

- Cambodia, Royal University of Phnom Penh
Phone +855 12 939 010 - Fax +855 23 880 116
phaldes@rupp.edu.kh - <http://www.rupp.edu.kh/>
- Cambodia, Svay Rieng University
Phone +855 44 715 776 - Fax +855 44 715 778
veasnachhay@sru.edu.kh - www.sru.edu.kh
- Laos, National University of Laos
Phone +856 21 770173 - Fax +856 21 770086
somchanh@gmail.com - <http://www.nuol.edu.la/>
- Mongolia, CITI Institute
Phone +976 95955182 - Fax +976 11 354254
azaa_6487@yahoo.com
- Myanmar, Yangon Technological University
Phone +951 642959 - Fax +951 642564
khintheyu@gmail.com
- Philippines, Ateneo de Manila University
Phone + 63 2 426 6125 - Fax + 63 2 426 6125
rmarcelo@ateneo.edu - <http://www.math.admu.edu.ph>
- Thailand, Prince of Songkla University, Pattani Campus
Phone +66 73 312 238 - Fax + 66 73 313 485
thantawan.k@gmail.com - <http://www.psu.ac.th/en>
- Vietnam, Qui Nhon University
Phone +84 56 3846156 - Fax +84 56 3846089
nguyentienphung@qnu.edu.vn - <http://www.qnu.edu.vn>
- Vietnam, Thang Long University
Phone +84-4 35 58 18 13 - Fax +84-4 35 63 67 75
lebinh.tlu@gmail.com - <http://www.thanglong.edu.vn/>
- Vietnam, University of Da Nang
Phone +84 511 3824787 - Fax +84 511 3823683
vthung@dut.udn.vn - <http://ud.udn.vn>

Do you want to know more about EMMA ?

Go to <http://emmasia.udn.vn> or get in touch with one of the local contacts:



How to apply

All the applications are online at <http://emma2014.ateneo.net>
You will have to provide your personal data and email that will be used to contact you during the whole application process. You will have to upload scanned versions of your transcript of record, motivation letter, letter(s) of recommendation and passport or ID.

<http://emmasia.udn.vn>

<http://emma2014.ateneo.net>

Coordinator and Co-Coordinator of the programme

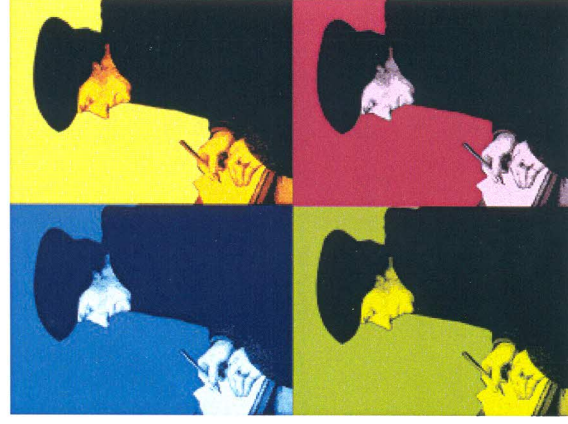


University of Danang



ERASMUS MUNDUS ACTION 2

Individual mobility programme sponsored by the European Community between Asian and European Universities



Desiderius Erasmus Roterdamus (1466 – 1536)

<http://emmasia.udn.vn>

EMMA Terminology

APU: Asian Partner University
EPU : European Partner University

Beneficiaries Target Groups:

- TG1: members (student and staff) of EMMA-APU
- TG2: nationals of EMMA-APU countries
- TG3: students in vulnerable situation* living in EMMA-APU countries

Fields of study (the programme is open to all fields but wants to focus on Sciences and Technology):

- (01) Agricultural Sciences; (02) Architecture, Urban and Regional Planning; (03) Art and Design; (04) Business Studies and Management Sciences; (05) Education and Teacher Training; (06) Engineering and Technology; (07) Geography, Geology; (08) Humanities; (09) Languages; (10) Law; (11) Mathematics and Informatics; (12) Medical Sciences; (13) Natural Sciences; (14) Social Sciences; (15) Communication and Information Sciences.

Exchange students (for Asian and European students): your home university agrees with the host university (through a Learning Agreement) that the teaching programme you will receive abroad replaces a part of your home programme and will be recognized, if it is successful, as such for your home diploma.

- Bachelor/Undergraduate: 6 or 10 months (U6, U10);
- Master: 6 or 11 months (M6, M11);
- Doctorate: 6 or 18 months (D6, D18).

Degree seeking students (only for Asian students): you will be enrolled in the host University for a complete programme and will get your diploma from the host University.

Doctorate: 36 months (D36).

Full support means all expenses for visa, travel, insurance, tuition in the EMMA-EPU and a scholarship or a grant for living expenses, depending on the level of the individual mobility flow.

EMMA means "Erasmus Mundus Mobility with Asia". It is a programme run by the EMMA consortium (17 universities), fully supported by the European Commission under the supervision of the Erasmus Mundus Action 2, run by EACEA.

* You have a refugee status or are an asylum beneficiary, you have been the object of unjustified expulsion, you belong to a population targeted by a specific national policy.

EMMASIA 2014

Is EMMA of interest to you?

▶ **Are you enrolled in a Bachelor degree programme in one of the EMMA-APU or EPU?**

You may get full support to spend 6 or 10 months in an EMMA-EPU (for Asian students) or EMMA-APU (for EU students) as an exchange student and get your degree from your home university.

▶ **Are you enrolled in a Master degree programme?**

You may get full support to spend 6 months or 11 months in an EMMA-EPU (for Asian students) or EMMA-APU (for EU students) as an exchange student and get your degree from your home university.

▶ **Are you enrolled in a Doctorate (PhD) degree programme?**

You may get full support to spend 6 months (for EU students) in an EMMA-APU or 18 months (for Asian students) in an EMMA-EPU as an exchange student and get your degree from your home university.

▶ **Do you wish to complete a Doctorate degree in a European university (TG2) ?**

You may get full support to spend 36 months (Doctorate) in one EMMA-EPU and get your degree from your host university.

▶ **Are you in a particularly vulnerable situation (TG3) ?**

You may get full support to spend 10 months (Bachelor) or 11 months (Master) in one EMMA-EPU.

▶ **Did you finish your Doctorate/PhD ?**

You may get full support to spend 6 months in one of the EMMA-EPU's or APU's laboratory (Postdoc, P6).

▶ **Are you a staff-member of one of the EMMA-APU or EPU?**

You may get full support to spend 1 month (S1, for APU staff) in one EMMA-EPU or 2 or 3 months (S2 or S3, for EPU staff) in one EMMA-APU for improving your personal skills, your knowledge of the European or Asian Higher Education System and preparing sustainable exchanges of students between your home and host University.

Interested ?

There will be 3 cohorts:

	Cohort 1	Cohort 2	Cohort 3
For Asian Applicants			
From APU	D18, S1	U6, U10, M6, P6	U10, P6
From non-APU	D36	M11, D18	
For European Applicants			
From EPU	S2, S3		U6, U10, M6, D6
From non-EPU	S2		M6, D6, P6

Application Period	15 Nov - 31 Dec 2013	15 Oct - 15 Dec 2014	15 Oct - 15 Dec 2015
--------------------	----------------------	----------------------	----------------------