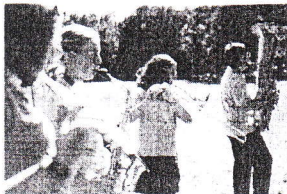


## MAJORS

### SYMPHONIC ENSEMBLES (STRINGS & WINDS)



Both majors offer great opportunity for students to play in large ensembles. They have positive influence on young people who learn how to work as a team and listen to each other. The Band and Orchestra program is designed to challenge students whatever their level of proficiency may be. Our conducting staff selects the repertoire from various symphonic pieces of different styles, periods and composers. This major consists of daily intensive rehearsals, sectionals and technique classes.

However, the minimum recommended experience with the music instrument is 2 - 3 years for wind players and 3 - 4 for string players.

Our 7-day session is also open for our alumni participants over the age of 19.

FACE CZ (CMCY), session I: July 17 - 26, 2014 (8 - 19 years)	Symphonic Ensembles Jon Waite, U.S.A. Ann Marie Jones, U.S.A.
FACE CZ (CMCY), session II: July 27 - August 2, 2014 (8 - 19+ years)	Symphonic Ensembles Jon Waite, U.S.A. Ann Marie Jones, U.S.A.

### INTERNATIONAL CHORAL ENSEMBLE (I.C.E.)

Students of this new major will have the opportunity to sing songs of different styles and periods with other students. The pieces will be performed in English, Latin, and other languages. Previous choral ensemble experience isn't necessary, however students should be able to read music.



FACE CZ (CMCY), session I: July 17 - 26, 2014 (8 - 19 years)	International Choral Ensemble (I.C.E.) Oldriska Honsova, Czech Rep.
---	--

### RECORDER ENSEMBLE

This major reflects huge tradition and popularity of this woodwind instrument all over Europe. Our goal is to educate new players for symphonic band through the recorder as a start-up instrument. Recommended experience: 2 years.

FACE CZ (CMCY), session I: July 17 - 26, 2014 (8 - 19 years)	Recorder Ensemble Eva Zemanova, Czech Rep.
---	---

### GUITAR ENSEMBLE

Wonderful opportunity for students to play in the guitar ensemble. The repertoire will include both classical and contemporary music of different styles. Recommended experience: 2 years.

FACE CZ (CMCY), session II: July 27 - August 2, 2014 (8 - 19 years)	Guitar Ensemble Petra Polackova, Czech Rep.
--	--

### HARP

This intensive course will provide both elementary and intermediate harp experience and will concentrate on harp technique introducing lever and pedal harp. This program includes private lessons, music theory and history of the harp. Students will also get orchestra experience. Both major and elective students must be able to read both treble and bass clefs. Lever and pedal harps will be provided. However, students are encouraged to bring their own instrument.

FACE CZ (CMCY), session I: July 17 - 26, 2014 (8 - 19 years)	Harp to be announced
---	-------------------------

### PIANO (ensemble)

This major for piano students will concentrate mainly on multiple-hand literature and experience. Students will learn new music to share with each other and make music together. Classes take place both at the camp and the public school in Horni Jeleni, approx. 15 min. of walking from the camp. Please bring substantial shoes for walking and indoor shoes for piano practice. Minimum recommended experience: 2 years.



FACE CZ (CMCY), session I: July 17 - 26, 2014 (8 - 19 years)	Piano (ensemble) Eva Suchankova, Czech Rep.
FACE CZ (CMCY), session II: July 27 - August 2, 2014 (8 - 19 years)	Piano (ensemble) Lucie Kubatova, Czech Rep.

### ENGLISH (through) THEATRE

This major is mainly designed for campers whose native language is NOT English. Along with expanding vocabulary students will also learn basic acting techniques with the main emphasis on correct pronunciation and accent. Students may also bring their own scripts. We recommend this major to students with minimum 2 years of English study. No theatre experience is necessary.



FACE CZ (CMCY), session II: July 27 - August 2, 2014 (8 - 19 years)	English Theatre to be announced
--	------------------------------------

### CZECH THEATRE

This new major offers a great chance to improve acting skills such as improvisation, stage movements, vocal performance and Czech language. It's ideal for international students with Czech background as they will need to be in daily intensive communication with Czech native speakers.

FACE CZ (CMCY), session II: July 27 - August 2, 2014 (8 - 19 years)	Czech Theatre Jiri Zajicek, Czech Rep.
--	---

2

3

## GENERAL INFORMATION

Fine Arts Camps Europe serve young participants between the age of 8 - 19. They admit students of any race, color, religion, national or ethnic origin, and do not discriminate in the administration of their programs. Students will be accepted on first come, first served basis. Instruction languages: Czech / Slovak and English.

### TUITION

Fine Arts Camps Europe 2014 - basic tuition		
length of stay		USD
FACE CZ, 7 days, July 27 - August 2, 2014		335
FACE CZ, 10 days, July 17 - 26, 2014		465
FACE CZ, 17 days, July 17 - August 2, 2014		765
transfer Prague - FACE CZ - Prague		110

prices in EUR or other currency will be calculated according to current exchange rate. Residents of Czech Republic, Slovakia, Poland, Hungary, Romania, Bulgaria, Slovenia, Croatia, Bosnia and Herzegovina, Macedonia (FYROM), Serbia, Montenegro, Albania, the Ukraine, Latvia, Lithuania, Estonia may apply for 25% discount.

Residents of other EU countries, Norway, Switzerland, Iceland, USA, Canada, Russia, Belarus, Georgia, Australia, New Zealand, Argentina, Brazil, Venezuela, Guatemala, Honduras, Chile, Costa Rica, Mexico, Nicaragua, Panama, Paraguay, Uruguay, El Salvador, Turkey, Israel, Japan, South Korea, Malaysia, Singapore, Taiwan may apply for 10% discount.

The basic tuition includes instruction, room, full board and a new C.M.C.Y./FACE polo shirt. This tuition does not include transportation. All travel arrangements must be made individually. Deadline for all payments is on May 31, 2014. Payment in cash upon arrival will be charged additional 25 USD.

### DISCOUNTS (only one discount will be used)

**First moment** 3% discount for applications received by January 31, 2014 and full payment received by February 28, 2014.

**Family discount** 5% will be given out to 2 and more participants from one family.

### UNIFORMS

Camp uniforms are to be worn by all campers, teachers and staff for all concerts and some other activities as decided by camp management. Some parts of the uniform (Blue Lake polo shirts, sweaters, and sweatshirts) may be rented at the camp (fee 40 CZK). New C.M.C.Y./FACE polo shirts (330 CZK) and sweatshirts (430 CZK) can be purchased at the camp. (1 EUR = approx. 26 CZK, 1 USD = approx. 18 CZK). This uniform is to be worn with navy blue or black pants or skirt and dark socks (students have to bring their own). Our laundry service is provided only for uniform items. Since our camp is situated in the middle of the forest, please bring substantial shoes.

### CAMPUS

FACE CZ - our traditional campus is located in a facility with natural surroundings called TÁBOR RADOST (CAMP "JOY") near Horni Jeleni, Czech Republic approx. 130 km east of Prague. Students will stay in small cabins with 4 bunk beds or in hostel rooms with 4 single beds. Bathrooms are located in each building. Meals including breakfast, morning snack, lunch, afternoon snack, dinner, and soft drinks will be served in the camp cafeteria.

### REFUND POLICY

70% of paid tuition will be refunded to participants who notify camp of cancellation at least 30 days before the opening day.

60% of paid tuition will be refunded to participants who notify camp of cancellation at least 7 days before the opening day.

No refunds will be made in case the camp is notified of cancellation less than 7 days before the opening day or early withdrawal from the camp is made for any reason.

4

### ELECTIVES

An hour daily will be reserved for electives. Students can choose choir, drawing, harp, piano, percussion elementary, Czech drama, English drama, English conversation, music theory, individual practice, nature hikes, jazz band, and sports.

### EVENING PROGRAMS

Besides music classes, our goal is to show campers the beauty of music also through evening concerts and recitals. Evening concerts and recitals of staff and student ensembles will be held for the whole camp season. All events will take place on campus.



### CONCERTS AND REHEARSALS

Dates	Opening	Mid-session concert	End-of-session concert	Final performance
FACE CZ, session I, July 17 - 26, 2014	July 17 @ 2 pm	July 22 @ 7:30 pm	July 25 @ 7:30 pm	July 26, 9:30 to 3 pm (see schedule)
FACE CZ, session II, July 27 - Aug. 2, 2014	July 27 @ 2 pm	July 30 @ 7:30 pm	none	Aug. 2, 9:30 to 3 pm (see schedule)

### TRANSPORTATION - INDIVIDUAL

For information please refer to <http://www.chtm.cz> or e-mail to [info@chtm.cz](mailto:info@chtm.cz).

### TRANSFERS TO/FROM CAMP

FACE CZ (CMCY) Campers can use our direct bus service from Prague to Horni Jeleni and back. **Departures:** July 16, July 26, 2014: Prague Wilsonova St. (Main Train Station) @ 3:30 p.m. **Arrivals:** July 26, 2014 @ 8:30 p.m. and August 3, 2014 @ 11:30 a.m. Prague Wilsonova St. (Main Train Station).

### WHAT'S NEW?

**International Exchange Program FACE-IN** between Fine Arts Camps Europe (Czech Rep.) and Blue Lake Fine Arts Camp (U.S.A.) providing 18 days of both host family and camp experience. Host families in U.S. Midwest and the Czech Republic / Slovakia WANTED. More information at [www.chtm.cz](http://www.chtm.cz)

Music for School Wind / String / Symphonic Ensembles available at FACILE e-shop in cooperation with Alliance Publications Inc. U.S.A. More info at [www.chtm.cz](http://www.chtm.cz)



## Contacts & information

Please send all applications, questions and comments to:

**Czech Music Camp for Youth**  
Kolarskeho 390  
533 74 Horni Jeleni  
Czech Republic

e-mail: [info@chtm.cz](mailto:info@chtm.cz)  
phone: +420-723-130 004

For latest news please refer to our web page:

<http://www.chtm.cz>



international edition  
Czech Music Camp for Youth, non-profit corporation, 2013

5



CMCY non-profit organization, Kolárskeho 390, 533 74 Horní Jelení, Czech Rep.  
phone +420-723-130 004, e-mail: info@chtm.cz

## INTERNATIONAL APPLICATION

Fine Arts Camps Europe 2014

Last name: \_\_\_\_\_  
 First name: \_\_\_\_\_  
 Birthdate: (month/day/year) \_\_\_\_\_  
 Address (street, number, city, state, postal code) \_\_\_\_\_  
 Country of residence: \_\_\_\_\_ Country of citizenship: \_\_\_\_\_  
 Phone: \_\_\_\_\_  
 E-mail: \_\_\_\_\_  
 Father's Name: \_\_\_\_\_ Phone: \_\_\_\_\_  
 Mother's Name: \_\_\_\_\_ Phone: \_\_\_\_\_  
 Cabin/room mate (only 1 name) \_\_\_\_\_  
 I have my own FACE (C.M.C.Y.) / Blue Lake polo shirt YES (-17 USD) / NO \_\_\_\_\_  
 Polo shirt size (circle) XS S M L XL \_\_\_\_\_

I would like FACE (C.M.C.Y.) sweatshirt YES (+25 USD) / NO size: S M L XL \_\_\_\_\_

### How did you learn about our camp?

internet	poster at school
recommendation by (name):	different (please describe):

### MAJOR

FACE 2014, 10 days, July 17 – 26, 2014, (ages 8 – 19)	FACE 2014, 7 days, July 27 – August 2, 2014, (ages 8 – 19)
Symphonic Ensembles (strings & winds)	Symphonic Ensembles (ages 8 – 19+) (strings & winds)
Recorder Ensemble	Piano (ensemble)
International Choral Ensemble (I.C.E.)	Guitar Ensemble
Piano (ensemble)	English Theatre
Harp	Czech Theatre

ELECTIVE (mark your preference, choose two options, you'll be signed up for one)

Sports	Czech Drama	Jazz Band
Drawing	Music Theory	English Conversation
Harp (session I)	Individual Practice	English Drama (session II)
Piano	Nature Hikes	Percussion - elementary
Choir		

### INSTRUMENT & LANGUAGE

Instrument No. 1: \_\_\_\_\_ Years of study: \_\_\_\_\_  
 Instrument No. 2: \_\_\_\_\_ Years of study: \_\_\_\_\_  
 Native language: \_\_\_\_\_ Other languages: \_\_\_\_\_  
 Knowledge of English: \_\_\_\_\_ Years of study: \_\_\_\_\_  
 (beginner, intermediate, upper intermediate, advanced)

Length of stay	zone C USD
FACE CZ, 7 days, July 27 – August 2, 2014	335
FACE CZ, 10 days, July 17 – 26, 2014	465
FACE CZ, 17 days, July 17 – August 2, 2014	765
transfer Prague – FACE CZ, July 16, July 26	55
transfer FACE CZ – Prague, July 26	45
transfer FACE CZ – Prague, Aug. 3	55
Payment in cash upon arrival	25
Paypal payment (of total tuition, only for individuals)	3 %
Zone A residents of Czech Republic, Slovakia, Poland, Hungary, Romania, Bulgaria, Slovenia, Croatia, Bosnia and Herzegovina, Macedonia (FYROM), Serbia, Montenegro, Albania, the Ukraine, Latvia, Lithuania, Estonia may apply for 25% discount	
Zone B other EU countries, Norway, Switzerland, Iceland, USA, Canada, Russia, Belarus, Georgia, Australia, New Zealand, Argentina, Brazil, Venezuela, Guatemala, Honduras, Chile, Costa Rica, Mexico, Nicaragua, Panama, Paraguay, Uruguay, El Salvador, Turkey, Israel, Japan, South Korea, Malaysia, Singapore, Taiwan may apply for 10% discount.	
Zone C countries not listed in A and B	
<b>DISCOUNTS (only one discount applicable)</b>	
First moment 3% discount, application by January 31, 2014, full payment by February 28, 2014	
New Year Additional Bonus + 1% to First Moment application by December 31, 2013, full payment by January 31, 2014	
Family discount 5% given out to two and more participants from one family.	

\*\* EUR prices will be calculated according to current exchange rate

The basic tuition includes instruction, room, full board and a new C.M.C.Y. polo shirt. This tuition does not include transportation. All travel arrangements must be made individually. Deadline for all payments is on **May 31, 2014**.

### PARENTAL CONSENT

As a parent/guardian of the Fine Arts Camps Europe (FACE) participant I agree with his/her participation and give permission to the Czech Music Camp for Youth (CMCY), non-profit organization, to store participant's personal data only for the purpose of his/her stay at the CMCY/FACE. I agree that any audio or video recordings of participant made during his/her stay can be used for the publicity of the CMCY/FACE. I understand that in case of cancellation a non-refundable fee will be paid to the camp administration according to the C.M.C.Y. refund policy.

### CAMPER PLEDGE

As a participant of the Fine Arts Camps Europe I agree to follow Camp Regulations and cooperate with conductors, teachers and staff. I agree not to use or possess tobacco, alcoholic beverages or illegal drugs and not to go out of bounds without permission. I understand that violation of these rules may result in my dismissal from the program.

Parents signature \_\_\_\_\_

Date: \_\_\_\_\_

Camper signature \_\_\_\_\_