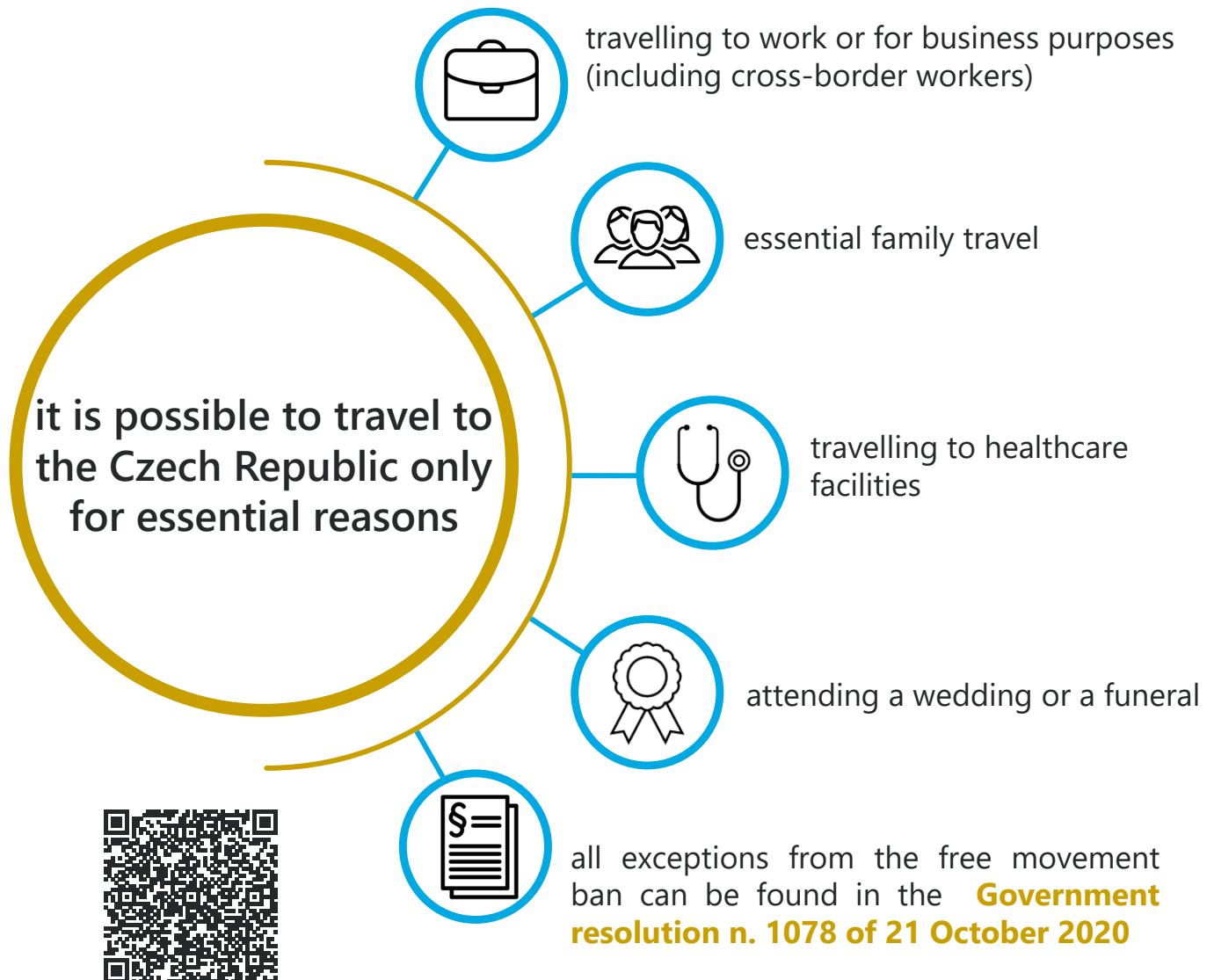


# Restriction on the entry of foreigners to the Czech Republic

On 21 October 2020 the Government of the Czech Republic decided on the ban to the free movement of all persons in the territory of the Czech Republic.



As a result of the crisis measures issued by the Government of the Czech Republic **it is not possible to travel to CZE for the purpose of tourism or visiting friends.**

The rules for entering the Czech Republic and quarantine measures defined by the Ministry of Health are still in force.

