



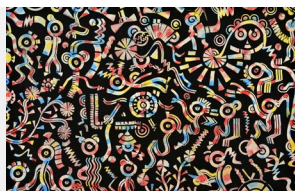
*Maya Sophie Stansbury (14 years)  
ZUŠ B. Martinů, Polička, Czech Republic*

## Invitation for children and teachers to participate in the 49<sup>th</sup> International Children's Exhibition of Fine Arts Lidice 2021

A hundred years ago, in his drama R.U.R., the Czech writer Karel Čapek used the word 'robot' for the first time. Thinking about how to call artificial workers, he sought advice with his brother, the painter Josef Čapek. "Call them Robots," murmured Josef Čapek over his brush. So, the Slavic word for forced labour, 'robota', became the basis for the word known all over the world. It would be interesting to see what Karel Čapek would write today when various appliances are much more present in our life, residing in our desks and pockets. In the meantime, robots assumed many different forms; they are helping at home, in production processes as well as in medicine and the question arises whether they do not lead us into blind alleys in some aspects. A recommendation concerning ethical principles of artificial intelligence will be one of the topics of the UNESCO General Conference in 2021.

**The 49<sup>th</sup> International Children's Exhibition of Fine Arts Lidice features the following theme:**

## **ROBOT and artificial intelligence**



## Sub-themes

- What the robot can(not) do
- Inside the machine
- R.U.R.: Robots in literature and film
- Year 2121
- Development and kinds of artificial intelligence
- Technology and ethics
- Data
- Nanorobots

## Eligibility conditions

- The participation in exhibition is open only to children aged 4 to 16 as individuals or as representatives of schools and art clubs. Handicapped participants can enter the exhibition regardless of age.
- The maximum format for a 2D entry – 70 × 50 cm.
- The maximum format for a 3D entry – 100 × 70 × 40 cm, weight max. 10 kg.
- A maximum of two entries of the same technique (painting, drawing, printmaking, mixed media, photography, film/animation, art objects) by one artist is acceptable; one artist can send in several entries of different techniques.
- This is to appeal to teachers to select the entries carefully to create a high quality school collection.
- Use spray fixative for entries employing colours that can be dusted or wiped off.
- Only photos on good-quality paper are acceptable.
- Films/animations – max. length: 3 minutes.

*(Eligibility for the competition requires compliance with both the simplified and the complete conditions at [www.mdvv-lidice.cz](http://www.mdvv-lidice.cz))*

## Registration

**The closing date for applications to the 49<sup>th</sup> edition is 19<sup>th</sup> February 2021**

### Application for the competition

1. To register your participation, please, fill in the Application Form to be downloaded from <http://www.mdvv-lidice.cz/vyzva/>. The filled-in application and the name list of participants are to be attached to entries.

### Labelling of entries

2. To label entries, please use the LABEL (to be downloaded from the website above).
  - a. Child's name and surname
  - b. Child's age, year of birth and gender
  - c. Name and full address of the school or organization responsible for sending the entry (Id. no. of the organization, name of the school, street, postcode, city) Information on awards will be sent to this address.
  - d. E-mail address of the organization to be used for communication on the exhibition – please, indicate the website of the school, the current e-mail address of the school or organization and the e-mail address of the art teacher(s) responsible for sending in the entries so that they could be informed about the competition.
  - e. If a child participates as an individual, indicate their name, age, gender and home address, including an e-mail for communication (of a parent of theirs).

To label entries, please, use the LABEL (to be downloaded from the website above). Please, fill in the label in block letters and Latin alphabet (preferably on a PC). Entries with illegible or incomplete labels will be excluded from the competition.

**The grounds for the exclusion of an entry from the competition:** Only original artworks are eligible. Copies, photocopies and digital copies are not eligible for assessment. Only such entries will be eligible for assessment that stick to the theme set for the competition. Entries larger than allowed, entries in passe-partout, mounted on colour or other papers and entries lacking a proper label will be excluded. The maximum weight of a consignment containing entries must not exceed 10 kgs. Each entry has to be properly labelled.

After the main exhibition is finished, smaller exhibitions will be created from the award-winning entries to tour other venues in Czechia and abroad.



**Památník Lidice – Lidická galerie**

Tokajická 152, 273 54 Lidice, Česká republika

+420 736 642 318, +420 312 253 702, [children@lidice-memorial.cz](mailto:children@lidice-memorial.cz)



[www.mdvv-lidice.cz](http://www.mdvv-lidice.cz)