

Czech Music Camp for Youth, non-profit organization opens

FINE ARTS CAMPS EUROPE 2013

17TH
season



at Radost camp, Horní Jelení,
Czech Republic

SESSION I (ages 8 - 19)

July 18 - 27, 2013

Symphonic Ensembles (winds & strings)

Recorder Ensemble

International Choral Ensemble

Piano (ensemble)

Harp

SESSION II (ages 8 - 19+)

July 28 - August 3, 2013

Symphonic Ensembles (winds & strings)

Piano (ensemble)

Guitar Ensemble

English Theatre

Czech Theatre

CONTACTS & APPLICATIONS

Czech Music Camp for Youth
Kolářského 390
533 74 Horní Jelení
Czech Republic

PHONE: +420-723 130 004
SKYPE: chtmface

E-MAIL: info@chtm.cz

<http://www.chtm.cz>



Dear students, parents and teachers,



I'm pleased to present the Fine Arts Camps Europe (Czech Music Camp for Youth) program for our 17th season. We opened our first camp in 1997 with 46 students enrolled in a small band and a string ensemble. Since then nearly 3 000 young musicians from 28 different countries joined our camp. Campers may enroll from 7 to 17 days in the upcoming season and choose from 8 major programs and 13 electives.

I hope you'll find our programs interesting and look forward to your stay in our campus located in a beautiful natural setting of central Europe.

Josef Kušička
Camp Director

CAMP PHILOSOPHY

Fine Arts Camps Europe serve students between the ages of 8 through 19. The purpose of this educational project is to give our campers opportunity to play in large ensembles like symphony orchestra, symphonic band or choral ensemble. Making music in a large group motivates students to develop their talent. Other music majors such as piano, harp, recorders, and guitar also focus on an ensemble performance. Besides music programs we offer the Drama or English (through) Theatre program where students can improve their English and also learn more about drama.

Since our campers come from different countries, we highly promote the idea of international understanding through the universal language of music.



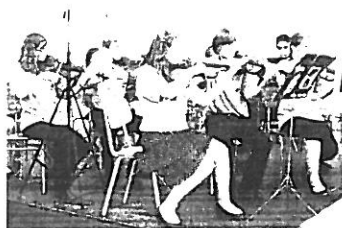
CAMP HISTORY

We opened our first music camp in Horní Jelení, Czech Republic in 1997. The idea for this project comes from Michigan, U.S.A., which is the location of large fine arts camps (Interlochen and Blue Lake). Our camp founder, **Fr. Walter Marek (1918 – 2010)** served as a treasurer and a board member of Blue Lake since its beginning in 1966. The director of C.M.C.Y. is Fr. Marek's nephew, **Josef Kušička**, who spent 6 summers at Blue Lake as a student and a counselor. Since our beginning in 1997 our program has grown in number and quality. In 2001 we have divided our program into 2 sessions due to high demand. This unique educational project received the moral support of the UNESCO in 2004.

Czech Music Camp for Youth is registered as a non-profit corporation in the Czech Republic.

MAJORS

SYMPHONIC ENSEMBLES (STRINGS & WINDS)



Both majors offer great opportunity for students to play in large ensembles. They have positive influence on young people who learn how to work as a team and listen to each other. The Band and Orchestra program is designed to challenge students whatever their level of proficiency may be. Our conducting staff selects the repertoire from various symphonic pieces of different styles, periods, and composers. This major consists of daily intensive

rehearsals, sectionals and technique classes.

However, the minimum recommended experience with the music instrument is 2 – 3 years for wind players and 3 – 4 for string players.

Our 7-day session is also open for our alumni participants over the age of 19.

FACE CZ (CMCY), session I: July 18 – 27, 2013 (8 – 19 years)	Symphonic Ensembles
	Jon Waite, U.S.A. Ann Marie Jones, U.S.A.
FACE CZ (CMCY), session II: July 28 – August 3, 2013 (8 – 19+ years)	Symphonic Ensembles
	Jon Waite, U.S.A. Ann Marie Jones, U.S.A.

INTERNATIONAL CHORAL ENSEMBLE (I.C.E.)

Students of this new major will have the opportunity to sing songs of different styles and periods with other students. The pieces will be performed in English, Latin, and other languages. Previous choral ensemble experience isn't necessary, however students should be able to read music.

FACE CZ (CMCY), session I: July 18 – 27, 2013 (8 – 19 years)	International Choral Ensemble (I.C.E.)
	to be announced

RECORDER ENSEMBLE

This major reflects huge tradition and popularity of this woodwind instrument all over Europe. Our goal is to educate new players for symphonic band through the recorder as a start-up instrument. Recommended experience: 2 years.

FACE CZ (CMCY), session I: July 18 – 27, 2013 (8 – 19 years)	Recorder Ensemble
	Eva Zemanova, Czech Rep.

GUITAR ENSEMBLE

Wonderful opportunity for students to play in the guitar ensemble. The repertoire will include both classical and contemporary music of different styles. Recommended experience: 2 years.



FACE CZ (CMCY), session II: July 28 – August 3, 2013 (8 – 19 years)	Guitar Ensemble
	Petra Polackova, Czech Rep.

CMCY non-profit organization, Kolárskeho 390, 533 74 Horní Jelení, Czech Rep.
phone +420-723-130 004, e-mail: info@chtm.cz

INTERNATIONAL APPLICATION

Fine Arts Camps Europe 2013

Last name:

First name:

Birthdate (month day year)

Address (street, number, city, state, postal code)

Country of residence

Country of citizenship

Phone

E-mail

Father's Name

Phone

Mother's Name

Phone

Cabin room mate (only 1 name):

I have my own FACE (C.M.C.Y.) / Blue Lake polo shirt YES (-17 USD) / NO

Polo shirt size (circle) XS S M L XL

I would like FACE (C.M.C.Y.) sweatshirt YES (+25 USD) / NO size S M L XL

How did you learn about our camp?

internet	poster at school
recommendation by (name)	different (please describe)

MAJOR

FACE 2013, 10 days, July 18 – 27, 2013, (ages 8 – 19)		FACE 2013, 7 days, July 28 – August 3, 2013, (ages 8 – 19)	
<input type="checkbox"/>	Symphonic Ensembles (strings & winds)	<input type="checkbox"/>	Symphonic Ensembles (ages 8 – 19+) (strings & winds)
<input type="checkbox"/>	Recorder Ensemble	<input type="checkbox"/>	Piano (ensemble)
<input type="checkbox"/>	International Choral Ensemble (I.C.E.)	<input type="checkbox"/>	Guitar Ensemble
<input type="checkbox"/>	Piano (ensemble)	<input type="checkbox"/>	English Theatre
<input type="checkbox"/>	Harp	<input type="checkbox"/>	Czech Theatre

ELECTIVE (mark your preference, choose two options, you'll be signed up for one)

<input type="checkbox"/>	Sports	<input type="checkbox"/>	Czech Drama	<input type="checkbox"/>	Jazz Band
<input type="checkbox"/>	Drawing	<input type="checkbox"/>	Music Theory	<input type="checkbox"/>	English Conversation
<input type="checkbox"/>	Harp (session I)	<input type="checkbox"/>	Individual Practice	<input type="checkbox"/>	English Drama (session II)
<input type="checkbox"/>	Piano	<input type="checkbox"/>	Nature Hikes	<input type="checkbox"/>	Percussion - elementary
<input type="checkbox"/>	Choir				

INSTRUMENT & LANGUAGE

Instrument No. 1: _____ Years of study: _____

Instrument No. 2: _____ Years of study: _____

Native language: _____ Other languages: _____

Knowledge of English: _____ Years of study: _____
(beginner, intermediate, upper intermediate, advanced)

Fine Arts Camps Europe 2013 – price list			
<i>length of stay</i>	<i>zone A USD</i>	<i>zone B USD</i>	<i>zone C USD</i>
FACE CZ, 7 days, July 28 – August 3, 2013	245	285	335
FACE CZ, 10 days, July 18 – 27, 2013	339	389	465
FACE CZ, 17 days, July 18 – August 3, 2013	559	659	765
transfer Prague – FACE CZ, July 17, July 27	35	45	55
transfer FACE CZ – Prague, July 27	25	35	45
transfer FACE CZ – Prague, Aug. 4	35	45	55
Payment in cash upon arrival	15	20	25
Paypal payment (of total tuition, only for individuals)	3 %	3 %	3 %
Zone A residents of Czech Republic, Slovakia, Poland, Hungary, Romania, Bulgaria, Slovenia, Croatia, Bosnia and Herzegovina, Macedonia (FYROM), Serbia, Montenegro, Albania, the Ukraine, Latvia, Lithuania, Estonia. Zone B other EU countries: Norway, Switzerland, Iceland, USA, Canada, Russia, Belarus, Georgia, Australia, New Zealand, Argentina, Brazil, Venezuela, Guatemala, Honduras, Chile, Costa Rica, Mexico, Nicaragua, Panama, Paraguay, Uruguay, El Salvador, Turkey, Israel, Japan, South Korea, Malaysia, Singapore, Taiwan. Zone C countries not listed in A and B.			
DISCOUNTS (only one discount applicable)			
First moment 3% discount, application by January 31, 2013, full payment by February 28, 2013			
New Year Additional Bonus + 1% to First Moment application by December 31, 2012, full payment by January 31, 2013			
Family discount 5% given out to two and more participants from one family.			

** EUR prices will be calculated according to current exchange rate

The basic tuition includes instruction, room, full board and a new C.M.C.Y. polo shirt. This tuition does not include transportation. All travel arrangements must be made individually. Deadline for all payments is on **May 31, 2013**

PARENTAL CONSENT

As a parent/guardian of the Fine Arts Camps Europe (FACE) participant I agree with his/her participation and give permission to the Czech Music Camp for Youth (CMCY), non-profit organization, to store participant's personal data only for the purpose of his/her stay at the CMCY/FACE. I agree that any audio or video recordings of participant made during his/her stay can be used for the publicity of the CMCY/FACE. I understand that in case of cancellation a non-refundable fee will be paid to the camp administration according to the C.M.C.Y. refund policy.

CAMPER PLEDGE

As a participant of the Fine Arts Camps Europe I agree to follow Camp Regulations and cooperate with conductors, teachers and staff. I agree not to use or possess tobacco, alcoholic beverages or illegal drugs and not to go out of bounds without permission. I understand that violation of these rules may result in my dismissal from the program.

 Parents signature _____
 Date _____

Camper signature _____

HARP

This intensive course will provide both elementary and intermediate harp experience and will concentrate on harp technique introducing lever and pedal harp. This program includes private lessons, music theory and history of the harp. Students will also get orchestra experience. Both major and elective students must be able to read both treble and bass clefs! Lever and pedal harps will be provided. However, students are encouraged to bring their own instrument.

FACE CZ (CMCY), session I: July 18 – 27, 2013 (8 – 19 years)	Harp to be announced
--	--------------------------------



PIANO (ensemble)

This major for piano students will concentrate mainly on multiple-hand literature and experience. Students will learn new music to share with each other and make music together. Classes take place both at the camp and the public school in Horní Jelení, approx. 15 min. of walking from the camp. Please bring substantial shoes for walking and indoor shoes for piano practice. Minimum recommended experience: 2 years.

FACE CZ (CMCY), session I: July 18 – 27, 2013 (8 – 19 years)	Piano (ensemble) Eva Suchankova, Czech Rep.
FACE CZ (CMCY), session II: July 28 – August 3, 2013 (8 – 19 years)	Piano (ensemble) to be announced

ENGLISH (through) THEATRE

This major is mainly designed for campers whose native language is NOT English. Along with expanding vocabulary students will also learn basic acting techniques with the main emphasis on correct pronunciation and accent. Students may also bring their own scripts. We recommend this major to students with minimum 2 years of English study. No theatre experience is necessary.

FACE CZ (CMCY), session II: July 28 – August 3, 2013 (8 – 19 years)	English Theatre to be announced
---	---

CZECH THEATRE

This new major offers a great chance to improve acting skills such as improvisation, stage movements, vocal performance and Czech language. It's ideal for international students with Czech background as they will need to be in daily intensive communication with Czech native speakers.

FACE CZ (CMCY), session II: July 28 – August 3, 2013 (8 – 19 years)	Czech Theatre to be announced
---	---

GENERAL INFORMATION

Fine Arts Camps Europe serve young participants between the age of 8 - 19. They admit students of any race, color, religion, national or ethnic origin, and do not discriminate in the administration of their programs. Students will be accepted on first come, first served basis. Instruction languages: Czech, Slovak and English.

TUITION

Fine Arts Camps Europe 2013 – basic tuition			
<i>length of stay</i>	<i>zone A USD</i>	<i>zone B USD</i>	<i>zone C USD</i>
FACE CZ, 7 days, July 28 - August 3, 2013	245	285	335
FACE CZ, 10 days, July 18 – 27, 2013	339	389	465
FACE CZ, 17 days, July 18 – August 3, 2013	559	659	765
transfer Prague – FACE CZ – Prague	70	90	110

prices in EUR or other currency will be calculated according to current exchange rate

Zone A residents of Czech Republic, Slovakia, Poland, Hungary, Romania, Bulgaria, Slovenia, Croatia, Bosnia and Herzegovina, Macedonia (FYROM), Serbia, Montenegro, Albania, the Ukraine, Latvia, Lithuania, Estonia

Zone B other EU countries, Norway, Switzerland, Iceland, USA, Canada, Russia, Belarus, Georgia, Australia, New Zealand, Argentina, Brazil, Venezuela, Guatemala, Honduras, Chile, Costa Rica, Mexico, Nicaragua, Panama, Paraguay, Uruguay, El Salvador, Turkey, Israel, Japan, South Korea, Malaysia, Singapore, Taiwan

Zone C countries not listed in A or B

The basic tuition includes instruction, room, full board and a new C.M.C.Y. / FACE polo shirt. This tuition does not include transportation. All travel arrangements must be made individually. Deadline for all payments is on **May 31, 2013**. Payment in cash upon arrival will be charged additional 25 USD.

DISCOUNTS (only one discount will be used)

First moment 3% discount for applications received by January 31, 2013 and full payment received by February 28, 2013

Family discount 5% will be given out to 2 and more participants from one family.

UNIFORMS

Camp uniforms are to be worn by all campers, teachers and staff for all concerts and some other activities as decided by camp management. Some parts of the uniform (Blue Lake polo shirts, sweaters, and sweatshirts) may be rented at the camp (fee 40 CZK). New C.M.C.Y. / FACE polo shirts (330 CZK) and sweatshirts (430 CZK) can be purchased at the camp. (1 EUR = approx. 26 CZK, 1 USD = approx. 18 CZK). This uniform is to be worn with navy blue or black pants or skirt and dark socks (students have to bring their own). Our laundry service is provided only for uniform items. Since our camp is situated in the middle of the forest, please bring substantial shoes.

CAMPUS

FACE CZ – our traditional campus is located in a facility with natural surroundings called TABOR RADOST (CAMP "JOY") near Horní Jelení, Czech Republic approx. 130 km east of Prague. Students will stay in small cabins with 4 bunk beds or in hostel rooms with 4 single beds. Bathrooms are located in each building. Meals including breakfast, morning snack, lunch, afternoon snack, dinner, and soft drinks will be served in the camp cafeteria.

REFUND POLICY

70 % of paid tuition will be refunded to participants who notify camp of cancellation at least 30 days before the opening day.

60 % of paid tuition will be refunded to participants who notify camp of cancellation at least 7 days before the opening day.

No refunds will be made in case the camp is notified of cancellation less than 7 days before the opening day or early withdrawal from the camp is made for any reason.



ELECTIVES

An hour daily will be reserved for electives. Students can choose choir, drawing, harp, piano, percussion, elementary Czech drama, English drama, English conversation, music theory, individual practice, nature hikes, jazz band, and sports.

EVENING PROGRAMS

Besides music classes, our goal is to show campers the beauty of music also through evening concerts and recitals. Evening concerts and recitals of staff and student ensembles will be held for the whole camp season. All events will take place on campus.

CONCERTS AND REHEARSALS

Dates	Opening	Mid-session concert	End-of-session concert	Final performance
FACE CZ, session I, July 18 – 27, 2013	July 18 @ 2 pm	July 23 @ 7:30 pm	July 26 @ 7:30 pm	July 27, 9:30 to 3 pm (see schedule)
FACE CZ, session II, July 28 – Aug 3, 2013	July 28 @ 2 pm	July 31 @ 7:30 pm	none	Aug 3, 9:30 to 3 pm (see schedule)

TRANSPORTATION - INDIVIDUAL

For information please refer to <http://www.chtm.cz> or e-mail to info@chtm.cz

TRANSFERS TO/FROM CAMP

FACE CZ (CMCY) Campers can use our direct bus service from Prague to Horní Jelení and back.

Departures: July 17, July 27, 2013. Prague Wilsonova St. (Main Train Station) @ 3:30 p.m.

Arrivals: July 27, 2013 @ 8:30 p.m. and August 4, 2013 @ 11:30 a.m. Prague Wilsonova St. (Main Train Station)

WHAT'S NEW IN 2013?

International Exchange Program FACE-IN between Fine Arts Camps Europe (Czech Rep.) and Blue Lake Fine Arts Camp (U.S.A.) providing 18 days of both host family and camp experience. Host families in Michigan / Illinois / Ohio and the Czech Republic / Slovakia WANTED. More information at www.chtm.cz

Music for School Wind / String / Symphonic Ensembles available at **FACILE e-shop** in cooperation with Alliance Publications Inc. U.S.A. More info at www.chtm.cz



Contacts & Information

Please send all applications, questions and comments to:

Czech Music Camp for Youth

Kolarskeho 390

533 74 Horní Jelení

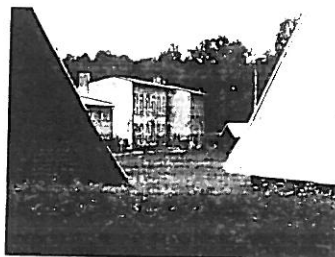
Czech Republic

e-mail: info@chtm.cz

phone: +420-723-130 004

For latest news please refer to our web page:

<http://www.chtm.cz>



international edition

Czech Music Camp for Youth, non-profit corporation, 2012